

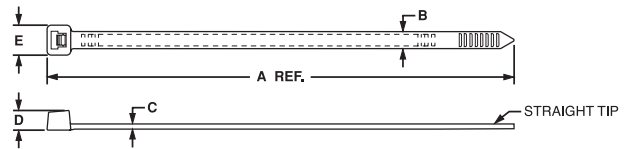
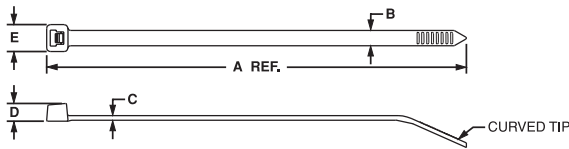
PANDUIT™ Nylon 6.6 Locking Cable Ties (PLT Series)

PAN-TY™ Cable Ties



Except PLT.6SM,
PLT5H, 6H, 8H & 13H

These versatile fasteners can be used in countless applications wherever you need to bundle wire, cable, or hose. They tie bundle diameters up to 330mm, they also can be joined together for even larger diameters. They have a minimum loop tensile strength from 36N to 1112N. Colours are available for specific colour-coding applications. (See pages 21-23)



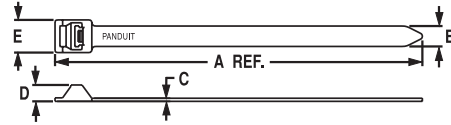
Cable Ties for Automatic Tools See Page 55.

Part Number	Length A	Width B	Thickness C	Head Height D	Head Width E	Max. Bundle Dia.	Min. Loop Tensile Str.	Recommended PANDUIT Installation Tool	Std. Pkg. Qty.	Std. Ctn. Qty.
	mm	mm	mm	mm	mm	mm	N			
Subminiature Cross Section										
PLT.6SM-C	71	1.8	0.8	2.4	3.2	15	36	GTS, PTS	100	1000
Miniature Cross Section										
PLT.7M-C	79	2.3	0.8	2.9	4.6	17	80	GTS, GS2B, PTS, PPTS, STS2	100	1000
PLT1M-C	99	2.5	1.1	3.9	4.6	22	80		100	1000
PLT1.5M-C	142	2.5	1.1	3.9	4.6	32	80		100	1000
PLT2M-C	203	2.5	1.1	3.9	4.6	51	80		100	1000
Intermediate Cross Section										
PLT1.5I-C	142	3.6	1.1	4.6	6.1	35	178	GTS, GS2B, PTS, PPTS, STS2	100	1000
PLT2I-C	203	3.6	1.1	4.6	6.1	51	178		100	1000
PLT2.5I-C	246	3.7	1.3	4.6	6.6	64	178		100	1000
PLT3I-C	290	3.7	1.3	4.6	6.6	76	178		100	1000
PLT4I-C	368	3.7	1.3	4.6	6.6	102	178		100	1000
Standard Cross Section										
PLT1S-C	122	4.8	1.3	5.6	8.0	25	222	GTS, GS2B, GTH, GS4H, PTS, PTH, PPTS, STS2, STH2	100	1000
PLT1.5S-C	157	4.8	1.3	5.6	8.0	38	222		100	1000
PLT2S-C	188	4.8	1.3	5.6	8.0	48	222		100	1000
PLT2.5S-C	249	4.8	1.3	5.6	8.6	64	222		100	1000
PLT3S-C	292	4.8	1.3	5.6	8.6	76	222		100	1000
PLT4S-C	368	4.8	1.3	5.6	8.6	102	222		100	1000
PLT4.5S-C	394	4.8	1.3	5.6	8.6	114	222		100	1000
PLT5S-C	445	4.8	1.3	5.6	8.6	127	222		100	500
Light-Heavy Cross Section (Straight Tip)										
PLT6LH-L	556	7.6	1.9	8.3	12.2	152	534	GTH, GS4H, GS4EH, PPTEH, STH2, ST2EH	50	500
PLT7LH-L	627	7.6	1.9	8.3	12.2	178	534		50	500
PLT8LH-L	701	7.6	1.9	8.3	12.2	203	534		50	500
PLT9LH-L	775	7.6	1.9	8.3	12.2	229	534		50	500
PLT10LH-L	871	7.6	1.9	8.3	12.2	262	534		50	1000
Heavy Cross Section (Straight Tip)										
PLT2H-L	206	7.6	1.9	7.4	12.2	51	534	GTH, GS4H, GS4EH, PPTEH, STH2, ST2EH	50	500
PLT2.5H-L	251	7.6	1.9	7.4	12.2	64	534		50	500
PLT3H-L	290	7.6	1.9	7.4	12.2	76	534		50	500
PLT4H-L	368	7.6	1.9	7.4	12.2	102	534		50	500
PLT5H-L	450	8.9	2.0	8.6	14.2	127	778		50	500
PLT6H-L	530	8.9	2.0	8.6	14.2	152	778		50	500
PLT8H-L	779	8.9	2.0	8.6	14.2	229	778		50	500
PLT13H-Q	1100	8.9	2.0	8.6	14.2	330	778		25	500

PAN-TY™ Lashing Ties



Lashing Ties typically are used on heavy duty jobs such as securing conduit or large cable bundles to permanent structures. For indoor use. Can be used with MCEH mounting clip in weather resistant material (see page 16).



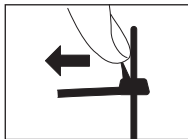
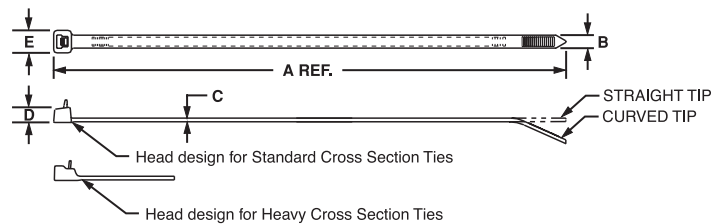
Part Number	Length A	Width B	Thickness C	Head Height D	Head Width E	Max. Bundle Dia.	Min. Loop Tensile Str.	Recommended PANDUIT Installation Tool	Std. Pkg. Qty.	Std. Ctn. Qty.
	mm	mm	mm	mm	mm	mm	N			
Extra-Heavy Cross Section										
PLT2EH-C	229	12.7	1.9	10.2	20.3	51	1112	GS4EH, PPTEH, ST2EH	100	1000
PLT5EH-C	511	12.7	1.9	10.2	20.3	127	1112		100	1000
PLT6EH-C	564	12.7	1.9	10.2	20.3	152	1112		100	1000
PLT8EH-C	719	12.7	2.2	10.2	20.3	203	1112		100	1000
PLT10EH-C	869	12.7	2.2	10.2	20.3	254	1112		100	500
PLT12EH-C	1019	12.7	2.2	10.2	20.3	305	1112		100	500

PAN-TY™ Releasable Cable Ties



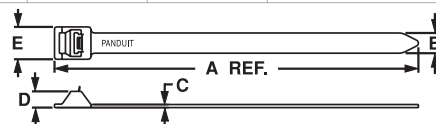
Except 'H' cross section

The extended tab end of releasable cable ties permits easy release and re-use even after the tie has been pulled up snug by hand. Releasable ties are particularly useful in applications where changes are anticipated during development, production or servicing in the field.



To release, grasp the head of the cable tie, deflect release tab and pull the cable tie away from the bundle.

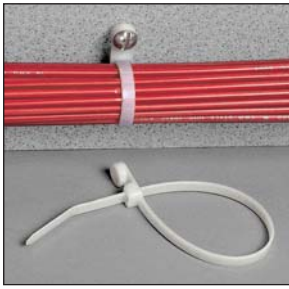
Part Number	Length A	Width B	Thickness C	Head Height D	Head Width E	Max. Bundle Dia.	Min. Loop Tensile Str.	Recommended PANDUIT Installation Tool	Std. Pkg. Qty.	Std. Ctn. Qty.
	mm	mm	mm	mm	mm	mm	N			
Standard Cross Section										
PRT1S-C	122	4.8	1.3	5.6	8.0	25	222	Hand Installed Only	100	1000
PRT1.5S-C	160	4.8	1.3	5.6	8.0	38	222		100	1000
PRT2S-C	188	4.8	1.3	5.6	8.0	48	222		100	1000
PRT3S-C	292	4.8	1.3	5.6	8.6	76	222		100	1000
PRT4S-C	368	4.8	1.3	5.6	8.6	102	222		100	1000
Heavy Cross Section (Straight Tip)										
PRT2H-L	213	7.6	1.9	7.6	12.2	51	356	Hand Installed Only	50	500
PRT3H-L	290	7.6	1.9	7.6	12.2	76	356		50	500
PRT4H-L	368	7.6	1.9	7.6	12.2	102	356		50	500



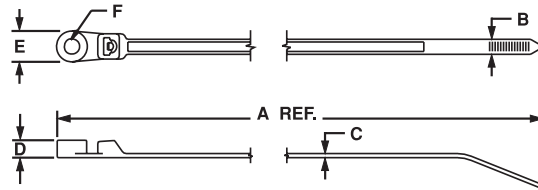
PAN-TY™ Releasable Lashing Ties

Part Number	Length A	Width B	Thickness C	Head Height D	Head Width E	Max. Bundle Dia.	Min. Loop Tensile Str.	Recommended PANDUIT Installation Tool	Std. Pkg. Qty.	Std. Ctn. Qty.
	mm	mm	mm	mm	mm	mm	N			
Extra-Heavy Cross Section										
PRT2EH-C	229	12.7	1.9	10.2	20.3	51	1112	Hand Installed Only	100	1000
PRT5EH-C	510	12.7	1.9	10.2	20.3	127	1112		100	1000
PRT6EH-C	564	12.7	1.9	10.2	20.3	152	1112		100	1000
PRT8EH-C	719	12.7	2.2	10.2	20.3	203	1112		100	1000
PRT10EH-C	869	12.7	2.2	10.2	20.3	254	1112		100	500
PRT12EH-C	1019	12.7	2.2	10.2	20.3	305	1112		100	500

PAN-TY™ Clamp Ties

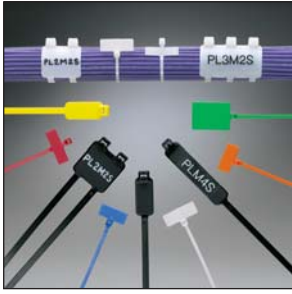


Clamp ties are used to attach a bundle to another surface such as a control panel, wall or ceiling, using another fastener. The design allows for bundling before or after screwing clamp in place.

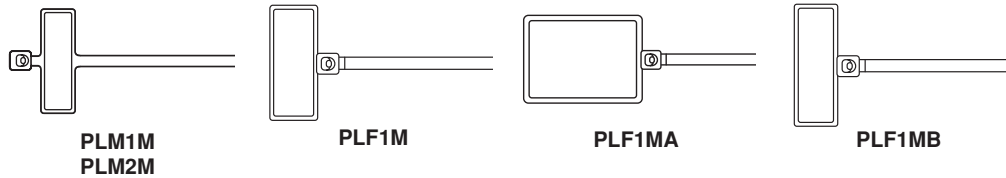
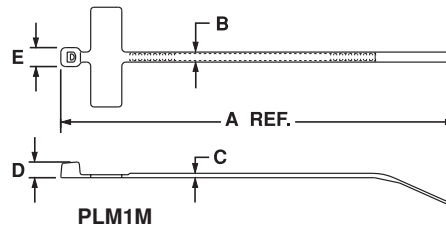


Part Number	Length A mm	Width B mm	Thickness C mm	Boss Height D mm	Boss Width E mm	Hole Diameter F mm	Metric Screw Size	Max. Bundle Dia. mm	Min. Loop Tensile Str. N	Recommended PANDUIT Installation Tool	Std. Pkg. Qty.	Std. Ctn. Qty.
Miniature Cross Section												
PLC1M-S4-C	110	2.5	1.2	3.9	6.1	3.0	M2.5	20	80	GTS, GS2B, PTS, PPTS, STS2	100	1000
Intermediate Cross Section												
PLC1.5I-S8-C	156	3.4	1.2	4.2	8.5	4.4	M4	32	178	GTS, GS2B, PTS, PPTS, STS2	100	1000
Standard Cross Section												
PLC2S-S6-C	201	4.8	1.2	4.1	9.5	3.7	M3	47	222	GTS, GS2B, GTH, GS4H, PTS, PTH, PPTS, STS2, STH2	100	1000
PLC2S-S10-C	201	4.8	1.2	4.1	9.5	5.2	M5	47	222		100	1000
PLC3S-S10-C	305	4.8	1.3	5.6	9.5	5.2	M5	76	222		100	1000
PLC4S-S10-C	381	4.8	1.3	5.6	9.5	5.2	M5	102	222		100	1000
Heavy Cross Section												
PLC2H-S25-L	228	7.6	1.9	6.7	12.7	6.6	M6	51	534	GTH, GS4H, GS4EH, PTH, PPTEH, STH2, ST2EH	50	500
PLC4H-S25-L	384	7.6	1.9	6.7	12.7	6.7	M6	102	534		50	500

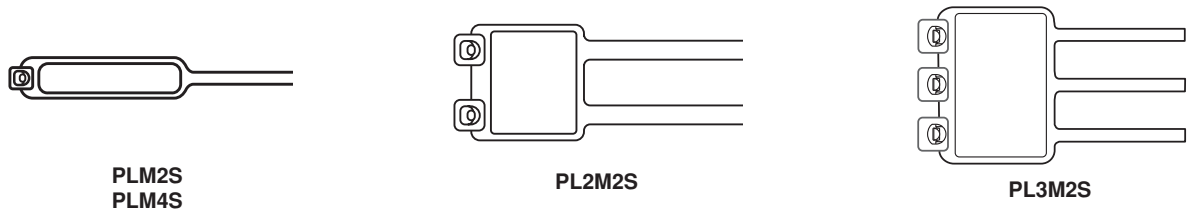
PAN-TY™ Marker & Flag Ties



Marker and Flag Ties fasten and identify bundles at the same time. They can be marked with *PANDUIT* Marker Pens.



Part Number	Length A	Width B	Thickness C	Head Height D	Head Width E	Write-On Area	Max. Bundle Dia.	Min. Loop Tensile Str.	Recommended <i>PANDUIT</i> Installation Tool	Std. Pkg. Qty.	Std. Ctn. Qty.
	mm	mm	mm	mm	mm	mm	mm	N			
Miniature Cross Section											
PLF1M-C	109	2.5	1.1	3.9	4.6	7.9 x 19.1	22	80	GTS, GS2B, PTS, PPTS, STS2	100	1000
PLF1MA-C	130	2.5	1.1	3.9	4.6	19.1 x 26.4	22	80		100	1000
PLF1MB-C	101	2.5	1.1	3.9	4.6	7.9 x 23.4	19	80		100	1000
PLM1M-C	99	2.5	0.9	3.9	4.6	6.6 x 24.1	19	80		100	1000
PLM2M-C	203	2.5	0.9	3.9	4.6	6.6 x 24.1	51	80		100	1000



Standard Cross Section

PLM2S-C	188	4.7	1.3	5.6	8.1	11.1 x 22.1	45	222	GTS, GS2B, GTH, GS4H, PTS, PPTS, STS2, STH2	100	1000
PLM4S-C	371	4.7	1.3	5.6	8.1	11.1 x 50.8	102	222		100	1000
PL2M2S-L	188	4.7	1.3	5.6	8.1	22.1 x 27.2	45	222		50	500
PL3M2S-L	188	4.7	1.3	5.6	8.1	22.1 x 45.5	45	222		50	500

Marker Ties are also available in weather resistant black nylon for outdoor use. May be marked with *PANDUIT* PX-10 White Marking Pen (See page 117).

Can be marked with *PANDUIT* Marker Pens or Computer Printable Labels.



Mulder-Hardenberg B.V., The Netherlands
Tel.: +31 (0)23 - 531 91 84
info1@m-h.biz

Mulder-Hardenberg N.V., Belgium
Tel.: +32 (0)3 - 660 13 20
info@m-h.biz

Mulder-Hardenberg GmbH, Germany
Tel.: +49 (0)6192 - 97 91 85
info@m-h.biz

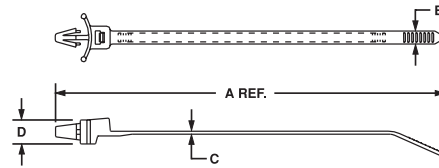
www.mulder-hardenberg.com

PAN-TY™ Wing Push Mount Cable Ties

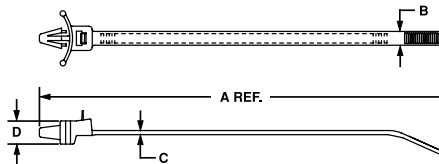


Push mount ties are used to attach a cable bundle to a surface such as a flat panel. The anchor is easily pressed into a pre-drilled hole and locks in place. The wings provide constant tension when installed, creating a stable, secure fixture and rattle-free installation.

PLWP



PRWP



Locking Style (PLWP)

Part Number	Length A mm	Width B mm	Thickness C mm	Head Height D mm	Nominal Hole Diameter mm	Max. Panel Thickness mm	Max. Bundle Dia. mm	Min. Loop Tensile Str. N	Recommended PANDUIT Installation Tool	Std. Pkg. Qty.	Std. Ctn. Qty.
Miniature Cross Section											
PLWP1M-C	109	2.5	1.1	5.6	4.7	2.4	22	80	GTS, GTSL, GS2B, PTS, PPTS, STS2	100	1000
Intermediate Cross Section											
PLWP1.5I-C	152	3.4	1.2	7.1	4.7	2.4	32	178	GTS, GTSL, GS2B, PTS, PPTS, STS2	100	1000
Standard Cross Section											
PLWP1S-C	132	4.8	1.3	9.4	6.4	2.7	25	222	GTS, GTSL, GS2B, GTH, GS4H, PTS, PTH, PPTS, STS2, STH2	100	1000
PLWP1SA-D	130	4.8	1.3	9.4	4.7	2.4	25	222		500	5000
PLWP1SB-D	132	4.8	1.3	9.4	4.7	4.0	25	222		500	5000
PLWP1.5S-D	173	4.8	1.3	9.4	6.4	2.7	38	222		500	5000
PLWP1.5SA-D	170	4.8	1.3	9.4	4.7	2.4	38	222		500	5000
PLWP2S-C	198	4.8	1.3	9.4	6.4	2.7	45	222		100	1000
PLWP2SA-D	196	4.8	1.3	9.4	4.7	2.4	45	222		500	5000
PLWP2SB-D	198	4.8	1.3	9.4	4.7	4.0	45	222		500	5000
Heavy Cross Section											
PLWP2H-TL	226	7.6	1.9	9.4	6.8	2.7	51	534	GTH, GS4H, GS4EH, PTH, STH2, ST2EH	250	2500
PLWP3H-TL	305	7.6	1.9	9.4	6.8	2.7	76	534		250	2500

Releasable Style (PRWP)

Standard Cross Section

PRWP1S-C	132	4.8	1.3	9.4	6.4	2.7	25	222	Hand Installed Only	100	1000
PRWP1SA-D	130	4.8	1.3	9.4	4.7	2.4	25	222		500	5000
PRWP1SB-D	132	4.8	1.3	9.4	4.7	4.0	25	222		500	5000
PRWP1.5S-D	173	4.8	1.3	9.4	6.4	2.7	38	222		500	5000
PRWP2S-D	198	4.8	1.3	9.4	6.4	2.7	45	222		500	5000
Heavy Cross Section											
PRWP2H-TL	226	7.6	1.9	9.4	6.8	2.7	51	534	Hand Installed Only	250	2500



Mulder-Hardenberg B.V., The Netherlands
Tel.: +31 (0)23 - 531 91 84
info1@m-h.biz

Mulder-Hardenberg N.V., Belgium
Tel.: +32 (0)3 - 660 13 20
infoe@m-h.biz

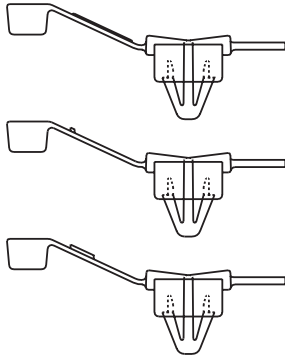
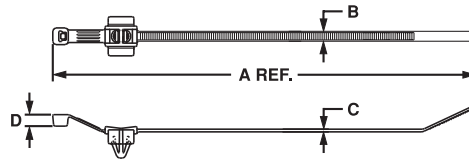
Mulder-Hardenberg GmbH, Germany
Tel.: +49 (0)6192 - 97 91 85
infoe@m-h.biz

www.mulder-hardenberg.com

PAN-TY™ Centre Mounted Wing Push Mount Cable Ties



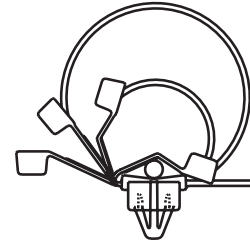
Centre mounted winged push mount cable ties centre the bundle on all bundle diameters.



PLWP30, 40, 50SC wing push mount cable ties are for normal wire bundles.

PLWP40SD Wing push mount cable ties with convoluted tubing bump that prevents lateral and axial movement on corrugated loom tubing.

PLWP50SE



Bundle Diameters from 3mm to 50mm

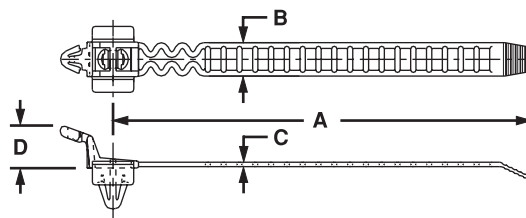
Part Number	Length A mm	Width B mm	Thickness C mm	Head Height D mm	Nominal Hole Diameter mm	Max. Panel Thickness mm	Max. Bundle Dia. mm	Min. Loop Tensile Str. N	Recommended PANDUIT Installation Tool	Std. Pkg. Qty.	Std. Ctn. Qty.
Standard Cross Section											
PLWP30SC-D30	147	4.8	1.3	5.6	6.8	3.0	30	222	GTS, GS2B, GTH, GS4H, PTS, PPTS, STS2, STH2	500	5000
PLWP40SC-D30	178	4.8	1.3	5.6	6.8	3.0	40	222		500	5000
PLWP50SC-D30	208	4.8	1.3	5.6	6.8	3.0	50	222		500	5000
PLWP40SD-D30	178	4.8	1.3	5.6	6.8	3.0	40	222		500	5000
PLWP50SE-D30	208	4.8	1.3	5.6	6.8	3.0	50	222		500	5000

For corrugated loom tubing see pages 166-167.

PAN-TY™ Ladder Style Winged Push Mount Cable Ties — Releasable



Unique releasable ladder design eliminates the need for multiple clamp sizes

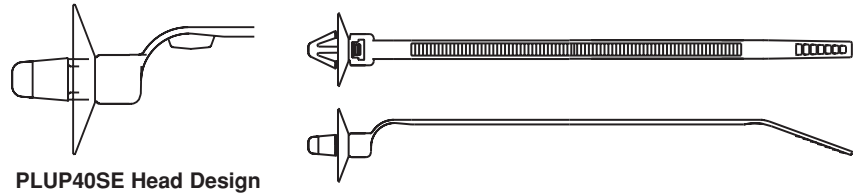


Part Number	Length A mm	Width B mm	Thickness C mm	Head Height D mm	Nominal Hole Diameter mm	Max. Panel Thickness mm	Max. Bundle Dia. mm	Min. Loop Tensile Str. N	Recommended PANDUIT Installation Tool	Std. Pkg. Qty.	Std. Ctn. Qty.
Standard Cross Section											
PRLWP30S-D30	120	9.7	1.3	12	6.5	3.0	36	156	Hand Installed Only	500	5000
PRLWP50S-D30	180	9.7	1.3	12	6.5	3.0	55	156		500	5000

PANDUIT™ Specialty Tie — Umbrella Wing Push Mount Cable Ties



The anchor snaps into a hole in a light gauge metal or plastic panel. No screw or other fasteners required. The umbrella shaped disc stabilises the anchor and insures a tight, rattle-free fit. In addition, the umbrella disc provides a dust-tight and semi-liquid tight seal against the panel surface. The material is heat stabilised, black nylon 6.6

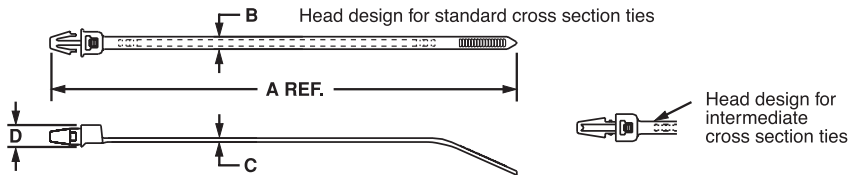


PLUP40SE Head Design

Part Number	Length	Width	Thickness	Nominal Hole Diameter	Max. Panel Thickness	Max. Bundle Dia.	Min. Loop Tensile Str.	Recommended PANDUIT Installation Tool	Std. Pkg. Qty.	Std. Ctn. Qty.
	mm	mm	mm	mm	mm	mm	N			
Standard Cross Section										
PLUP40S-D30	177	4.8	1.2	6.8	1.3	40	222	GTS, GS2B, GTH, GS4H, PTS, PPTS, STS2, STH2	500	5000
PLUP40SE-D30	177	4.8	1.2	6.8	1.3	40	222		500	5000

*For use with Corrugated Loom Tubing.

PAN-TY™ Push Mount Cable Ties



Push Mount Tie Style

Part Number	Length A	Width B	Thickness C	Head Height D	Hole Diameter	Panel Thickness	Max. Bundle Dia.	Min. Loop Tensile Str.	Recommended PANDUIT Installation Tool	Std. Pkg. Qty.	Std. Ctn. Qty.
	mm	mm	mm	mm	mm	mm	mm	N			
Intermediate Cross Section											
PLP1.5I-C	156	3.4	1.1	6.0	4.7	2.4	32	178	GTS, GTSL, GS2B, PTS, PPTS, STS2	100	1000
Standard Cross Section											
PLP1S-M	135	4.6	1.3	9.0	6.4	3.2	25	222	GTS, GTSL, GS2B, GTH, GS4H, PTS, PTH, PPTS, STS2, STH2	1000	10000
PLP1.5S-M	170	4.6	1.3	9.0	6.4	3.2	38	222		1000	10000
PLP2S-C	200	4.6	1.3	9.0	6.4	3.2	45	222		100	1000



Mulder-Hardenberg B.V., The Netherlands
Tel.: +31 (0)23 - 531 91 84
info1@m-h.biz

Mulder-Hardenberg N.V., Belgium
Tel.: +32 (0)3 - 660 13 20
info@m-h.biz

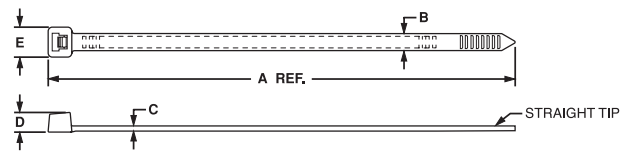
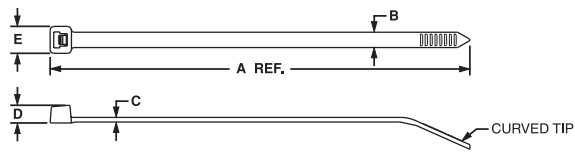
Mulder-Hardenberg GmbH, Germany
Tel.: +49 (0)6192 - 97 91 85
info@m-h.biz

www.mulder-hardenberg.com

PAN-TY™ Cable Ties

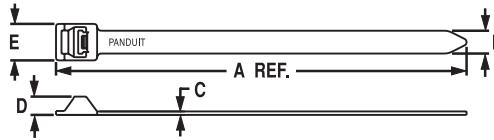


Weather resistant nylon has greater resistance to ultraviolet light which damages natural nylon. Where adverse outdoor conditions exist, see technical/application data section (pages 56-57) to select proper cable tie material for specific applications.



Part Number	Length A mm	Width B mm	Thickness C mm	Head Height D mm	Head Width E mm	Max. Bundle Dia. mm	Min. Loop Tensile Str. N	Recommended PANDUIT Installation Tool	Std. Pkg. Qty.	Std. Ctn. Qty.
Subminiature Cross Section										
PLT.6SM-C0	71	1.8	0.8	2.4	3.2	15	36	GTS, GTSL, PTS	100	1000
Miniature Cross Section										
PLT.7M-M0	79	2.3	0.8	2.9	4.6	17	80	GTS, GTSL, GS2B, PTS, PPTS, STS2	1000	50000
PLT1M-C0	99	2.5	1.1	3.9	4.6	22	80		100	1000
PLT1.5M-C0	142	2.5	1.1	3.9	4.6	32	80		100	1000
PLT2M-C0	203	2.5	1.1	3.9	4.6	51	80		100	1000
Intermediate Cross Section										
PLT1.5I-C0	142	3.6	1.1	4.6	6.1	35	178	GTS, GTSL, GS2B, PTS, PPTS, STS2	100	1000
PLT2I-C0	203	3.6	1.1	4.6	6.1	51	178		100	1000
PLT2.5I-C0	246	3.7	1.3	4.6	6.6	64	178		100	1000
PLT3I-C0	290	3.7	1.3	4.6	6.6	76	178		100	1000
PLT4I-C0	368	3.7	1.3	4.6	6.6	102	178		100	1000
Standard Cross Section										
PLT1S-C0	122	4.8	1.3	5.6	8.0	25	222	GTS, GTSL, GS2B, GTH, GS4H, PTS, PTH, PPTS, STS2, STH2	100	1000
PLT1.5S-C0	157	4.8	1.3	5.6	8.0	38	222		100	1000
PLT2S-C0	188	4.8	1.3	5.6	8.0	48	222		100	1000
PLT2.5S-C0	249	4.8	1.3	5.6	8.6	64	222		100	1000
PLT3S-C0	292	4.8	1.3	5.6	8.6	76	222		100	1000
PLT4S-C0	368	4.8	1.3	5.6	8.6	102	222		100	1000
PLT4.5S-C0	394	4.8	1.3	5.6	8.6	114	222		100	1000
PLT5S-C0	445	4.8	1.3	5.6	8.6	127	222		100	500
Light-Heavy Cross Section										
PLT6LH-L0	556	7.6	1.9	8.3	12.2	152	534	GTH, GS4H, GS4EH, PPTEH, STH2, ST2EH	50	500
PLT7LH-L0	627	7.6	1.9	8.3	12.2	178	534		50	500
PLT8LH-L0	701	7.6	1.9	8.3	12.2	203	534		50	500
PLT9LH-L0	775	7.6	1.9	8.3	12.2	229	534		50	500
Heavy Cross Section (Straight Tip)										
PLT2H-L0	206	7.6	1.9	7.4	12.2	51	534	GTH, GS4H, GS4EH, PPTEH, STH2, ST2EH	50	500
PLT2.5H-L0	251	7.6	1.9	7.4	12.2	64	534		50	500
PLT3H-L0	290	7.6	1.9	7.4	12.2	76	534		50	500
PLT4H-L0	368	7.6	1.9	7.4	12.2	102	534		50	500
PLT5H-L0	450	8.9	2.0	8.6	14.2	127	778		50	500
PLT6H-L0	530	8.9	2.0	8.6	14.2	152	778		50	500
PLT8H-L0	779	8.9	2.0	8.6	14.2	229	778		50	500
PLT13H-Q0	1100	8.9	2.0	8.6	14.2	330	778		25	500

PAN-TY™ Lashing Ties

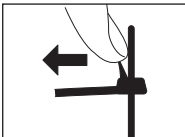
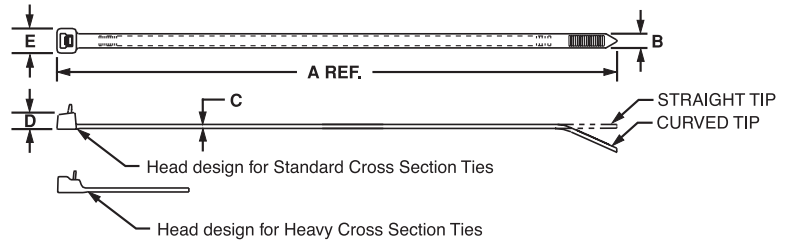


Part Number	Length A mm	Width B mm	Thickness C mm	Head Height D mm	Head Width E mm	Max. Bundle Dia. mm	Min. Loop Tensile Str. N	Recommended PANDUIT Installation Tool	Std. Pkg. Qty.	Std. Ctn. Qty.
Extra-Heavy Cross Section										
PLT2EH-Q0	229	12.7	1.9	10.2	20.3	51	1112	GS4EH, ST2EH	25	250
PLT5EH-Q0	511	12.7	1.9	10.2	20.3	127	1112		25	250
PLT6EH-Q0	564	12.7	1.9	10.2	20.3	152	1112		25	250
PLT8EH-Q0	719	12.7	2.2	10.2	20.3	203	1112		25	250
PLT10EH-Q0	869	12.7	2.2	10.2	20.3	254	1112		25	250
PLT12EH-Q0	1019	12.7	2.2	10.2	20.3	305	1112		25	250

PAN-TY™ Releasable Cable Ties



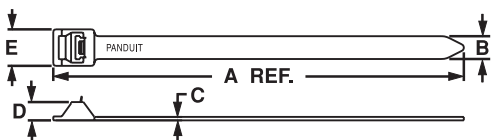
The extended tab end of releasable cable ties permits easy release and re-use even after tie has been pulled up snug by hand. Releasable ties are particularly useful where changes are anticipated during development, production or servicing in the field.



To release, grasp the head of the cable tie, deflect release tab and pull the cable tie away from the bundle.

Part Number	Length A mm	Width B mm	Thickness C mm	Head Height D mm	Head Width E mm	Max. Bundle Dia. mm	Min. Loop Tensile Str. N	Recommended PANDUIT Installation Tool	Std. Pkg. Qty.	Std. Ctn. Qty.
Standard Cross Section										
PRT1S-C0	122	4.8	1.3	5.6	8.0	25	222	Hand Installed Only	100	1000
PRT1.5S-C0	160	4.8	1.3	5.6	8.0	38	222		100	1000
PRT2S-C0	188	4.8	1.3	5.6	8.0	48	222		100	1000
PRT3S-C0	292	4.8	1.3	5.6	8.6	76	222		100	1000
PRT4S-C0	368	4.8	1.3	5.6	8.6	102	222		100	1000
Heavy Cross Section (Straight Tip)										
PRT2H-L0	213	7.6	1.9	7.6	12.2	51	356	Hand Installed Only	50	500
PRT3H-L0	290	7.6	1.9	7.6	12.2	76	356		50	500
PRT4H-L0	368	7.6	1.9	7.6	12.2	102	356		50	500

PAN-TY™ Releasable Lashing Ties

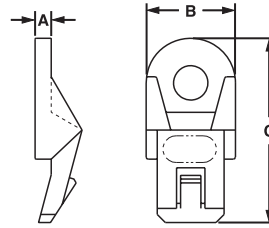


Part Number	Length A mm	Width B mm	Thickness C mm	Head Height D mm	Head Width E mm	Max. Bundle Dia. mm	Min. Loop Tensile Str. N	Recommended PANDUIT Installation Tool	Std. Pkg. Qty.	Std. Ctn. Qty.
Extra-Heavy Cross Section										
PRT2EH-Q0	229	12.7	1.9	10.2	20.3	51	1112	Hand Installed Only	25	250
PRT5EH-Q0	511	12.7	1.9	10.2	20.3	127	1112		25	250
PRT6EH-Q0	564	12.7	1.9	10.2	20.3	152	1112		25	250
PRT8EH-Q0	719	12.7	2.2	10.2	20.3	203	1112		25	250
PRT10EH-Q0	869	12.7	2.2	10.2	20.3	254	1112		25	250
PRT12EH-Q0	1019	12.7	2.2	10.2	20.3	305	1112		25	250

Lashing Tie Mounting Clip



Converts Lashing Ties into clamps. Easily snaps in place for a secure clamp. Used with Lashing Ties (See pages 8 and 15).

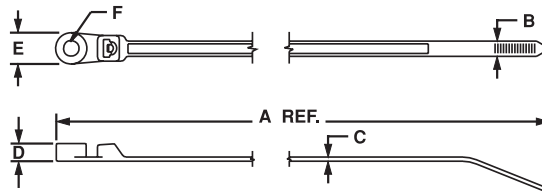


Part Number	Height A	Width B	Length C	Material	Colour	Mounting Method	Std. Pkg. Qty.	Std. Ctn. Qty.
	mm	mm	mm					
MCEH-S25-C0	3.3	17.0	35	Weather Resistant Nylon 6.6	Black	M6 Screw (not flathead)	100	1000

PAN-TY™ Clamp Ties — Weather Resistant



Clamps are used to attach a bundle to another surface such as a control panel, wall or ceiling, using another fastener. The design allows for bundling before or after screwing clamp in place.



Part Number	Length A	Width B	Thickness C	Boss Height D	Boss Width E	Nominal Hole Dia. F	Metric Screw Size	Max. Bundle Dia. mm	Min. Loop Tensile Str. N	Recommended PANDUIT Installation Tool	Std. Pkg. Qty.	Std. Ctn. Qty.
	mm	mm	mm	mm	mm	mm						
Miniature Cross Section												
PLC1M-S4-C0	110	2.5	1.2	3.9	6.1	3.0	M2.5	20	80	GTS, GTSL, GS2B, PTS, PPTS, STS2	100	1000
Intermediate Cross Section												
PLC1.5I-S8-C0	156	3.4	1.2	4.2	8.5	4.4	M4	32	178	GTS, GTSL, GS2B, PTS, PPTS, STS2	100	1000
Standard Cross Section												
PLC2S-S6-C0	201	4.8	1.2	4.1	9.5	3.7	M3	47	222	GTS, GTSL, GS2B, GTH, GS4H, PTS, PTH, PPTS, STS2, STH2	100	1000
PLC2S-S10-C0	201	4.8	1.2	4.1	9.5	5.2	M5	47	222		100	1000
PLC3S-S10-C0	305	4.8	1.3	5.6	9.5	5.2	M5	76	222		100	1000
PLC4S-S10-C0	381	4.8	1.3	5.6	9.5	5.2	M5	102	222		100	1000
Heavy Cross Section												
PLC2H-S25-TL0	228	7.6	1.9	6.7	12.7	6.5	M6	51	534	GTH, GS4H, GS4EH, PTH, STH2, ST2EH	250	2500
PLC4H-S25-L0	384	7.6	1.9	6.7	12.7	6.7	M6	102	534		50	500



Mulder-Hardenberg B.V., The Netherlands
Tel.: +31 (0)23 - 531 91 84
info1@m-h.biz

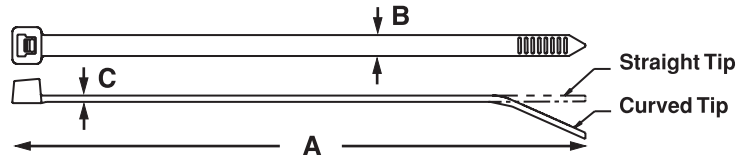
Mulder-Hardenberg N.V., Belgium
Tel.: +32 (0)3 - 660 13 20
info2@m-h.biz

Mulder-Hardenberg GmbH, Germany
Tel.: +49 (0)6192 - 97 91 85
info3@m-h.biz

www.mulder-hardenberg.com

PANDUIT™ Polypropylene Cable Ties (PLT/PRT Series)

PAN-TY™ Polypropylene Cable Ties — Indoor Use

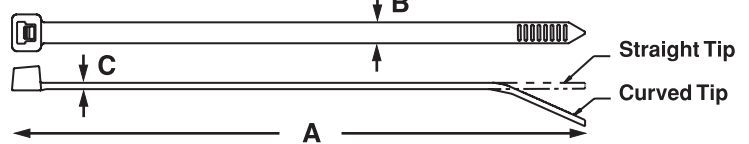


Part Number	Length A mm	Width B mm	Thickness C mm	Head Height mm	Head Width mm	Max. Bundle Dia. mm	Min. Loop Tensile Str. N	Recommended PANDUIT Installation Tool	Std. Pkg. Qty.	Std. Ctn. Qty.
Miniature Cross Section										
PLT1M-M109	99	2.5	1.1	3.9	4.6	22	49	GTS, GS2B, PTS, PPTS, STS2	1000	50000
Intermediate Cross Section										
PLT1.5I-M109	142	3.6	1.1	4.6	6.1	35	80	GTS, GS2B, PTS, PPTS, STS2	1000	25000
Standard Cross Section										
PLT2S-M109	188	4.8	1.3	5.6	8.0	48	133	GTS, GS2B, GTH, GS4H, PTS, PPTS, STS2, STH2	1000	10000
PLT3S-M109	292	4.8	1.3	5.6	8.6	76	133		1000	10000
PLT4S-M109	368	4.8	1.3	5.6	8.6	102	133		1000	5000
Heavy Cross Section (Straight Tip)										
PLT2H-TL109	206	7.6	1.9	7.4	12.2	51	222	GTH, GS4H, GS4EH, PPTHEH, STH2, ST2EH	250	2500
PLT3H-TL109	290	7.6	1.9	7.4	12.2	76	222		250	2500
PLT4H-TL109	368	7.6	1.9	7.4	12.2	102	222		250	2500

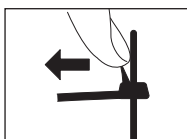
PAN-TY™ Weather Resistant Polypropylene Cable Ties



For chemical resistance in outdoor applications that are unsuitable for nylon and that do not require high loop tensile strengths.



Part Number	Length A mm	Width B mm	Thickness C mm	Head Height mm	Head Width mm	Max. Bundle Dia. mm	Min. Loop Tensile Str. N	Recommended PANDUIT Installation Tool	Std. Pkg. Qty.	Std. Ctn. Qty.
Miniature Cross Section										
PLT1M-M100	99	2.5	1.1	3.9	4.6	22	49	GTS, GTSL, GS2B, PTS, PPTS, STS2	1000	50000
Intermediate Cross Section										
PLT1.5I-M100	142	3.6	1.1	4.6	6.1	35	80	GTS, GTSL, GS2B, PTS, PPTS, STS2	1000	25000
Standard Cross Section										
PLT2S-M100	188	4.8	1.3	5.6	8.0	48	133	GTS, GTSL, GS2B, GTH, GS4H, PTS, PPTS, PPTS, STS2, STH2	1000	10000
PLT3S-M100	292	4.8	1.3	5.6	8.6	76	133		1000	10000
PLT4S-M100	368	4.8	1.3	5.6	8.6	102	133		1000	5000
Heavy Cross Section (Straight Tip)										
PLT2H-TL100	206	7.6	1.9	7.4	12.2	51	222	GTH, GS4H, GS4EH, PTH, STH2, ST2EH	250	2500
PLT3H-TL100	290	7.6	1.9	7.4	12.2	76	222		250	2500
PLT4H-TL100	368	7.6	1.9	7.4	12.2	102	222		250	2500

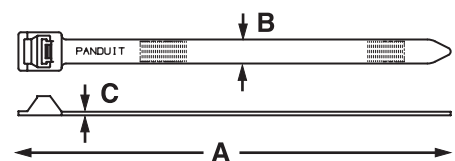


To release, grasp the head of the cable tie, deflect release tab and pull the cable tie away from the bundle.

Releasable

Extra-Heavy Cross Section

Part Number	Length A mm	Width B mm	Thickness C mm	Head Height mm	Head Width mm	Max. Bundle Dia. mm	Min. Loop Tensile Str. N	Recommended PANDUIT Installation Tool	Std. Pkg. Qty.	Std. Ctn. Qty.
PRT2EH-C100	229	12.7	1.9	10.2	20.3	51	400	Hand Installed Only	100	1000
PRT5EH-C100	511	12.7	1.9	10.2	20.3	127	400		100	1000
PRT6EH-C100	564	12.7	1.9	10.2	20.3	152	400		100	1000
PRT8EH-C100	719	12.7	2.2	10.2	20.3	203	400		100	1000



PAN-TY™ Flame Retardant Cable Ties

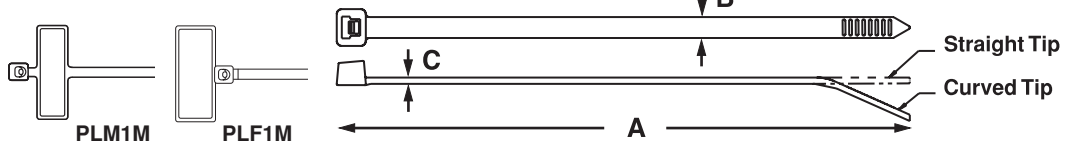


Except (60) Material

- Flame Retardant Nylon 6.6 meets the requirements of UL94V-0
- Can be used with flame retardant cable tie mounts (See pages 98, 101 and 105)



Except (60) Material



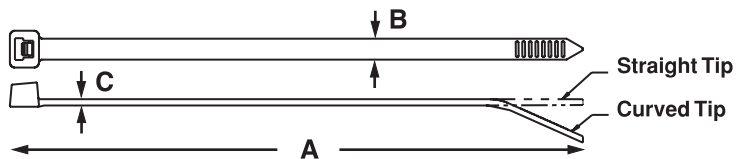
Part Number	Length A	Width B	Thickness C	Head Height	Head Width	Write-On Area	Max. Bundle Dia.	Min. Loop Tensile Str.	Recommended PANDUIT Installation Tool	Std. Pkg. Qty.	Std. Ctn. Qty.
	mm	mm	mm	mm	mm	mm	mm	N			
Miniature Cross Section											
PLF1M-M69	109	2.5	1.1	3.9	4.6	7.9 x 19.1	22	80	GTS, GS2B, PTS, PPTS, STS2	1000	25000
PLM1M-M69	99	2.5	0.9	3.9	4.6	6.6 x 24.1	19	80		1000	25000
PLT1M-M60‡	102	2.5	1.1	3.9	4.8	—	22	80		1000	25000
PLT1M-M69	102	2.5	1.1	3.9	4.8	—	22	80		1000	25000
PLT2M-M69	203	2.5	1.1	3.9	4.8	—	51	80		1000	25000
Intermediate Cross Section											
PLT1.5I-M69	142	3.6	1.1	4.5	6.1	—	35	178	GTS, GS2B, PTS, PPTS, STS2	1000	25000
PLT2I-M69	203	3.6	1.1	4.5	6.1	—	51	178		1000	25000
Standard Cross Section											
PLT2S-M60‡	188	4.8	1.3	5.6	8.1	—	48	222	GTS, GTSL, GS2B, GS4H, PTS, PTH, PPTS, STS2, STH2	1000	10000
PLT2S-M69	188	4.8	1.3	5.6	8.1	—	48	222		1000	10000
PLT4S-M69	368	4.8	1.3	5.6	8.6	—	102	222	GTS, GS2B, GTH, GS4H, PTS, PPTS, STS2, STH2	1000	5000
Heavy Cross Section (Straight Tip)											
PLT4H-TL69	371	7.6	1.9	7.4	12.2	—	102	534	GTH, GS4H, GS4EH, PPTEH, STH2, ST2EH	250	2500

‡ PLT1M-M60 and PLT2S-M60 are black Flame Retardant Nylon 6.6

PAN-TY™ Weather Resistant Nylon 12 Cable Ties



- For high moisture, corrosive environments and low temperatures
- For indoor use or weather resistant applications

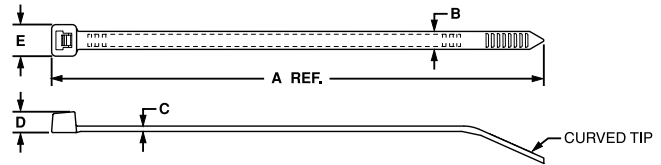


Part Number	Length A	Width B	Thickness C	Head Height	Head Width	Max. Bundle Dia.	Min. Loop Tensile Str.	Recommended PANDUIT Installation Tool	Std. Pkg. Qty.	Std. Ctn. Qty.
	mm	mm	mm	mm	mm	mm	N			
Intermediate Cross Section										
PLT1.5I-M120	142	3.6	1.1	4.6	6.1	35	111	GTS, GS2B, PTS, PPTS, STS2	1000	25000
Standard Cross Section										
PLT2S-M120	188	4.8	1.3	5.6	8.0	48	178	GTS, GS2B, GTH, GS4H, PTS, PPTS, STS2, STH2	1000	10000
PLT4S-M120	368	4.8	1.3	5.6	8.6	102	178		1000	5000
Light-Heavy Cross Section (Straight Tip)										
PLT8LH-C120	701	7.6	1.9	7.4	12.2	203	400	GTH, GS4H, GS4EH, PPTEH, STH2, ST2EH	100	2000
Heavy Cross Section (Straight Tip)										
PLT4H-TL120	368	7.6	1.9	7.4	12.2	102	400	GTH, GS4H, GS4EH, PPTEH, STH2, ST2EH	250	2500

PAN-TY™ HALAR Fluoropolymer Cable Ties



HALAR Cable Ties are UL Listed and UL Recognized as suitable for use in Air Handling Spaces. Many inspectors look for the distinctive maroon colour. HALAR cable ties have a low smoke density rating and an excellent flammability rating of UL94V-0. Other applications include nuclear plants, chemical environments, telecommunications equipment, aerospace, and high and low temperature environments.



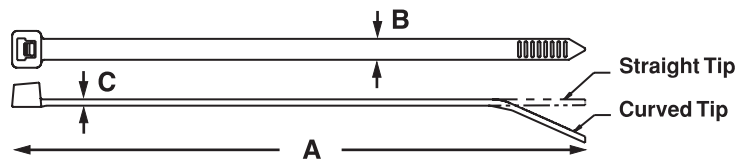
Part Number	Length A mm	Width B mm	Thickness C mm	Head Height D mm	Head Width E mm	Max. Bundle Dia. mm	Min. Loop Tensile Str. N	Recommended PANDUIT Installation Tool	Std. Pkg. Qty.	Std. Ctn. Qty.
Miniature Cross Section										
PLT1M-C702Y	102	2.5	1.1	4.7	4.8	22	80	GTS, GS2B, PTS, PPTS, STS2	100	1000
Standard Cross Section										
PLT2S-C702Y	188	4.8	1.4	6.1	8.1	48	222	GTS, GS2B, GTH, GS4H, PTS, PPTS, STS2, STH2	100	1000
PLT3S-C702Y	295	4.8	1.5	6.1	8.1	76	222		100	1000

*HALAR is a registered trademark of Solvay Solexis, Inc.

PAN-TY™ TEFZEL Fluoropolymer Cable Ties



TEFZEL cable ties are ideal for applications requiring resistance to environmental stresses such as chemical attack, gamma, radiation, ultraviolet radiation and extreme temperatures. In addition, TEFZEL has a UL flammability rating of UL94V-0. TEFZEL ties have a distinctive aqua blue colour.



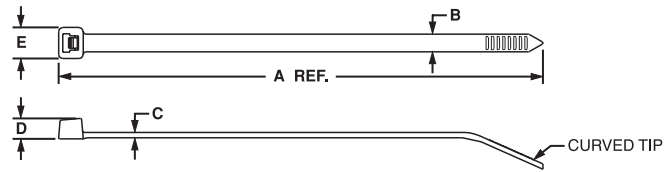
Part Number	Length A mm	Width B mm	Thickness C mm	Head Height mm	Head Width mm	Max. Bundle Dia. mm	Min. Loop Tensile Str. N	Recommended PANDUIT Installation Tool	Std. Pkg. Qty.	Std. Ctn. Qty.
Miniature Cross Section										
PLT1M-C76	102	2.5	1.1	4.7	4.8	22	80	GTS, GS2B, PTS, PPTS, STS2	100	1000
Intermediate Cross Section										
PLT2I-C76	203	3.4	1.1	4.6	6.1	51	111	GTS, GS2B, PTS, PPTS, STS2	100	1000
Standard Cross Section										
PLT2S-C76	188	4.8	1.4	6.1	8.1	48	222	GTS, GS2B, GTH, GS4H, PTS, PPTS, STS2, STH2	100	1000
PLT3S-C76	295	4.8	1.5	6.1	8.1	76	222		100	1000
PLT4S-C76	371	4.8	1.5	6.1	8.1	102	222		100	1000
Heavy Cross Section (Straight Tip)										
PLT3H-L76	292	7.6	1.9	9.1	12.2	78	534	GTH, GS4H, GS4EH, PPTEH, STH2, ST2EH	50	500
PLT4H-L76	371	7.6	1.9	9.1	12.2	102	534		50	500

*TEFZEL is a registered trademark of E.I. DuPont de Nemours Co.

PAN-TY™ Fluorescent Cable Ties



Designed for packaging and colour-coding applications. Ties are offered in four "hot" colours: Orange, Yellow, Green and Pink.



Part Number	Colour	Length	Width	Thickness	Head	Head	Max.	Min. Loop	Recommended PANDUIT Installation Tool	Std. Pkg. Qty.	Std. Ctn. Qty.
		A	B	C	Height	Width	Bundle	Tensile Str.			
Miniature Cross Section											
PLT1M-M53	Fluorescent Orange	99	2.5	1.1	3.9	4.6	22	80	GTS, GTSL, GS2B, PTS, PPTS, STS2	1000	50000
PLT1M-M54	Fluorescent Yellow	99	2.5	1.1	3.9	4.6	22	80		1000	50000
PLT1M-M55	Fluorescent Green	99	2.5	1.1	3.9	4.6	22	80		1000	50000
PLT1M-M59	Fluorescent Pink	99	2.5	1.1	3.9	4.6	22	80		1000	50000
Intermediate Cross Section											
PLT2I-M53	Fluorescent Orange	203	3.6	1.1	4.6	6.1	51	178	GTS, GTSL, GS2B, PTS, PPTS, STS2	1000	25000
PLT2I-M54	Fluorescent Yellow	203	3.6	1.1	4.6	6.1	51	178		1000	25000
PLT2I-M55	Fluorescent Green	203	3.6	1.1	4.6	6.1	51	178		1000	25000
PLT2I-M59	Fluorescent Pink	203	3.6	1.1	4.6	6.1	51	178		1000	25000
Standard Cross Section											
PLT2S-M53	Fluorescent Orange	188	4.8	1.3	5.6	8.0	48	222	GTS, GTSL, GS2B, GTH, GS4H, PTS, PTH, PPTS, STS2, STH2	1000	10000
PLT2S-M54	Fluorescent Yellow	188	4.8	1.3	5.6	8.0	48	222		1000	10000
PLT2S-M55	Fluorescent Green	188	4.8	1.3	5.6	8.0	48	222		1000	10000
PLT2S-M59	Fluorescent Pink	188	4.8	1.3	5.6	8.0	48	222		1000	10000
PLT3S-M53	Fluorescent Orange	292	4.8	1.3	5.6	8.6	76	222		1000	10000
PLT3S-M54	Fluorescent Yellow	292	4.8	1.3	5.6	8.6	76	222		1000	10000
PLT3S-M55	Fluorescent Green	292	4.8	1.3	5.6	8.6	76	222		1000	10000
PLT3S-M59	Fluorescent Pink	292	4.8	1.3	5.6	8.6	76	222		1000	10000



Mulder-Hardenberg B.V., The Netherlands
Tel.: +31 (0)23 - 531 91 84
info1@m-h.biz

Mulder-Hardenberg N.V., Belgium
Tel.: +32 (0)3 - 660 13 20
infoe@m-h.biz

Mulder-Hardenberg GmbH, Germany
Tel.: +49 (0)6192 - 97 91 85
info@m-h.biz

www.mulder-hardenberg.com

PAN-TY™ Cable Ties

Part Number System (Example of PLT2S-C)

PLT	2	S	—	C	
Part Description	Size	Cross Section	Screw Hole Size	Package Size	Colour
PLT = Locking Tie	Approx.	SM = Subminiature	(Clamp Ties Only)	Q = 25	See chart
PRT = Releasable Tie	Maximum	M = Miniature	-S4 = M2.5	L = 50	below for
PLC = Locking Clamp	Bundle	I = Intermediate	-S6 = M3	C = 100	colours and
PLF = Locking Flag	Dia. (In)	S = Standard	-S8 = M4	TL = 250	materials
PLM = Locking Marker		LH = Light-Heavy	-S10 = M5	D = 500	available
PLP = Locking Push Mount		H = Heavy	-S25 = M6	M = 1000	
PLWP = Locking Wing Push Mount		EH = Extra-Heavy		XMR = 2 reels/ 5000 ea.	
PRWP = Releasable Wing Push Mount					
PLUP = Locking Umbrella Push Mount					
PRLWP = Releasable Ladder Wing Push Mount				XMR ties found on page 55.	

Material / Colour Chart					
Material - Colour	PANDUIT Suffix*	Mil Spec Suffix**	Material - Colour	PANDUIT Suffix*	Mil Spec Suffix**
Nylon 6.6 - Natural (See Note)	✓	.9	Heat Stabilised Nylon 6.6 - Black	.30	.N/A
Weather Resistant Nylon 6.6 - Black	.0	.N/A	Heat Stabilised Nylon 6.6 - Natural	.39	.N/A
WR Nylon 6.6 - Black (Meets Mil. Spec.)	.00	.0	Nylon 6.6 - Fluorescent Orange	.53	.N/A
Nylon 6.6 - Brown	.1	.1	Nylon 6.6 - Fluorescent Yellow	.54	.N/A
Nylon 6.6 - Red	.2	.2	Nylon 6.6 - Fluorescent Green	.55	.N/A
Nylon 6.6 - Orange	.3	.3	Nylon 6.6 - Fluorescent Pink	.59	.N/A
Nylon 6.6 - Yellow	.4Y	.4	Flame Retardant Nylon 6.6 - Black	.60	.N/A
Nylon 6.6 - Green	.5	.5	Flame Retardant Nylon 6.6 - Ivory	.69	.N/A
Nylon 6.6 - Blue	.6	.6	TEFZEL™ - Aqua Blue	.76	.N/A
Nylon 6.6 - Purple	.7	.7	Weather Resistant Polypropylene - Black	.100	.N/A
Nylon 6.6 - Grey	.8	.8	Natural Polypropylene - Green	.109	.N/A
Nylon 6.6 - White	.10	.N/A	Nylon 12 - Black	.120	.N/A
Nylon 6.6 - Black	.20	.N/A	Heat Stabilised WR Nylon 6.6 - Black	.300	.N/A
			HALAR™ - Maroon	.702Y	.N/A

N/A = Not applicable to military specified parts

*TEFZEL is the registered trademark of E.I. DuPont de Nemours Co.
 *HALAR is the registered trademark of Solvay Solexis, Inc.

* Note: ✓ denotes PANDUIT standard Natural Nylon 6.6 (no suffix required in part number)
 ** Note: Mil. Spec. colour suffix per SAE AS33671 and AS33681 (formerly MS3367 and MS3368)

Part Number Availability List

Standard Packaging			Bulk Packaging		
Part Number	Natural Nylon 6.6	Colour / Material Suffix	Part Number	Natural Nylon 6.6	Colour / Material Suffix
PLC1M-S4-C	✓	0	PLC1M-S4-M	✓	0,30
PLC1.5I-S8-C	✓	0	PLC1.5I-S8-M	✓	0,30
PLC2S-S6-C	✓	0	PLC2S-S6-M	✓	0
PLC2S-S10-C	✓	0,14	PLC2S-S10-M	✓	0,20,30
PLC3S-S10-C	✓	0	PLC3S-S10-M	✓	0
PLC4S-S10-C	✓	0	PLC4S-S10-M	✓	0,30
PLC2H-S25-L	✓		PLC2H-S25-TL	✓	0,30
PLC4H-S25-L	✓	0	PLC4H-S25-TL	✓	0,30
PLF1M-C	✓	0	PLF1M-M	✓	0,2,3,4,6,10,69
PLF1MA-C	✓	3,4	PLF1MA-M	✓	0,2,3,4,5,6,10
PLF1MB-C	✓		PLF1MB-M	✓	
PLM1M-C	✓	0	PLM1M-M	✓	0,1,2,3,4,5,6,7,8,10,69
PLM2M-C	✓		PLM2M-M	✓	0,4,6
PLM2S-C	✓	0,4	PLM2S-D	✓	0,2,3,4,5,6,8
PLM4S-C	✓		PLM4S-D	✓	0,2,4,6



Mulder-Hardenberg B.V., The Netherlands
 Tel.: +31 (0)23 - 531 91 84
 info.nl@m-h.biz

Mulder-Hardenberg N.V., Belgium
 Tel.: +32 (0)3 - 660 13 20
 info.be@m-h.biz

Mulder-Hardenberg GmbH, Germany
 Tel.: +49 (0)6192 - 97 91 85
 info.de@m-h.biz

www.mulder-hardenberg.com

PAN-TY™ Cable Ties (continued)

Part Number Availability List

Standard Packaging			Bulk Packaging		
Part Number	Natural Nylon 6.6	Colour / Material Suffix	Part Number	Natural Nylon 6.6	Colour / Material Suffix
PL2M2S-L	✓	0	PL2M2S-D	✓	0,4,10
PL3M2S-L	✓		PL3M2S-D	✓	0,4
PLP1.5I-C	✓		PLP1.5I-M	✓	0,30
			PLP1S-M	✓	0,30
			PLP1.5S-M	✓	
PLP2S-C	✓		PLP2S-M	✓	0,30
PLT.6SM-C	✓	0	PLT.6SM-M	✓	0,30
PLT.7M-C	✓		PLT.7M-M	✓	0,30
PLT1M-C	✓	0,00,1,2,3,4,5,6,7,8,10,14,30,76,702	PLT1M-M	✓	0,00,1,2,3,4,5,6,7,8,10,14,20,30,53,54,55,59,60,69,76,100,109,300,702
			PLT1M-XMR	✓	0,00,1,2,3,4,5,6,7,8,10,30
PLT1.5M-C	✓	0	PLT1.5M-M	✓	0,00,1,2,3,4,5,6,7,8,10,14,20,30
			PLT1.5M-XMR	✓	0,00,30
PLT2M-C	✓	0	PLT2M-M	✓	0,1,2,3,4,5,6,7,8,10,20,30,69
PLT1.5I-C	✓	0,1,2,3,4,5,6,7,8,10,20,30	PLT1.5I-M	✓	0,00,1,2,3,4,5,6,7,8,10,20,30,69,100,109,120,300
PLT2I-C	✓	0,14,30,76	PLT2I-M	✓	0,1,2,3,4,5,6,7,8,10,14,20,30,53,54,55,59,69,76,300
PLT2.5I-C	✓	0	PLT2.5I-M	✓	0,20
PLT3I-C	✓	0,14	PLT3I-M	✓	0,2,3,4,5,6,8,10,14,20,30
PLT4I-C	✓	0,14	PLT4I-M	✓	0,2,5,6,14,20,30
PLT1S-C	✓	0	PLT1S-M	✓	0,30,38,300
PLT1.5S-C	✓	0	PLT1.5S-M	✓	0,30
PLT2S-C	✓	0,00,1,2,3,4,5,6,7,8,10,20,30,76,702	PLT2S-M	✓	0,00,1,2,3,4,5,6,7,8,10,20,30,38,39,53,54,55,59,60,69,76,100,109,120,300,702
PLT2.5S-C	✓	0	PLT2.5S-M	✓	0,30
PLT3S-C	✓	0,00,2,20,30,76,702	PLT3S-M	✓	0,00,1,2,3,4,5,6,7,8,10,20,30,53,54,55,59,76,100,109,702
PLT4S-C	✓	0,00,2,3,4,5,6,8,10,20,30,76	PLT4S-M	✓	0,00,1,2,3,4,5,6,7,8,10,14,20,30,69,76,100,109,120,300
PLT4.5S-C	✓	0	PLT4.5S-M	✓	0
PLT5S-C	✓	0	PLT5S-M	✓	0,2,3,4,5,6,8,30
PLT6LH-L	✓	0	PLT6LH-C	✓	0
PLT7LH-L	✓	0	PLT7LH-C	✓	0,30
PLT8LH-L	✓	0	PLT8LH-C	✓	0,120
PLT8LH-Q		0			
PLT9LH-L	✓	0	PLT9LH-C	✓	0,30
PLT10LH-L	✓		PLT10LH-C	✓	
PLT2H-L	✓	0	PLT2H-TL	✓	0,2,4,6,30,100,109,300
PLT2.5H-L	✓	0	PLT2.5H-TL	✓	0
PLT3H-L	✓	0,76	PLT3H-TL	✓	0,30,76,100,109
PLT4H-L	✓	0,00,76	PLT4H-TL	✓	0,00,1,2,3,4,5,6,10,20,30,69,76,100,109,120,300
PLT4H-C	✓	0			
PLT5H-L	✓	0	PLT5H-C	✓	0,30
PLT6H-L	✓	0	PLT6H-C	✓	0,30
PLT8H-Q		0	PLT8H-C	✓	0,00,30
PLT8H-L	✓	0			
PLT13H-Q	✓	0	PLT13H-C	✓	0,3
PLT2EH-Q		0	PLT2EH-C	✓	0
PLT5EH-Q	✓	0	PLT5EH-C	✓	0
PLT6EH-Q	✓	0	PLT6EH-C	✓	0
PLT8EH-Q		0	PLT8EH-C	✓	0



Mulder-Hardenberg B.V., The Netherlands
Tel.: +31 (0)23 - 531 91 84
infon@m-h.biz

Mulder-Hardenberg N.V., Belgium
Tel.: +32 (0)3 - 660 13 20
infoe@m-h.biz

Mulder-Hardenberg GmbH, Germany
Tel.: +49 (0)6192 - 97 91 85
infoe@m-h.biz

www.mulder-hardenberg.com

PAN-TY™ Cable Ties (continued)

Part Number Availability List

Standard Packaging			Bulk Packaging		
Part Number	Natural Nylon 6.6	Colour / Material Suffix	Part Number	Natural Nylon 6.6	Colour / Material Suffix
PLT10EH-Q		0	PLT10EH-C	✓	0
PLT12EH-Q		0	PLT12EH-C	✓	0
			PLUP40S-D		30
			PLUP40SE-D	✓	30
PLWP1M-C	✓		PLWP1M-D	✓	0,30
PLWP1.5I-C	✓		PLWP1.5I-D	✓	30
PLWP1S-C	✓	0	PLWP1S-D	✓	0,20,30
			PLWP1SA-D	✓	
			PLWP1SB-D	✓	
			PLWP1.5S-D	✓	30
			PLWP1.5SA-D	✓	
PLWP2S-C	✓	0	PLWP2S-D	✓	0,30
			PLWP2SA-D	✓	
			PLWP2SB-D	✓	
			PLWP2H-TL	✓	0,30
			PLWP3H-TL	✓	0
			PLWP30SC-D		30
			PLWP40SC-D		30
			PLWP40SD-D		30
			PLWP50SC-D		30
			PLWP50SE-D		30
			PRLWP30S-D		30
			PRLWP50S-D		30
PRT1S-C	✓	0	PRT1S-M	✓	0
PRT1.5S-C	✓	0	PRT1.5S-M	✓	0,30
PRT2S-C	✓	0	PRT2S-M	✓	0,2,3,4,6,7
PRT3S-C	✓	0	PRT3S-M	✓	0
PRT4S-C	✓	0	PRT4S-M	✓	0,2,3,4,6
PRT2H-L	✓	0	PRT2H-TL	✓	0
PRT3H-L	✓	0	PRT3H-TL	✓	0
PRT4H-L	✓	0	PRT4H-TL	✓	0
PRT2EH-Q		0	PRT2EH-C	✓	0,100
PRT5EH-Q	✓	0	PRT5EH-C	✓	0,100
PRT6EH-Q	✓	0	PRT6EH-C	✓	0,100
PRT8EH-Q		0	PRT8EH-C	✓	0,100
PRT10EH-Q		0	PRT10EH-C	✓	0
PRT12EH-Q		0	PRT12EH-C	✓	0
PRWP1S-C	✓		PRWP1S-D	✓	0
			PRWP1SA-D	✓	
			PRWP1SB-D	✓	
			PRWP1.5S-D	✓	0,20,30
			PRWP2S-D	✓	0
			PRWP2H-TL	✓	

