

CorBrick855X™

LOW-PROFILE, INTEGRATED EMBEDDED SYSTEM

CORBRICK FAMILY

COMPACT, RUGGED, WALL-MOUNTABLE,
HIGH PERFORMANCE-PER-WATT PACKAGE



PRODUCT HIGHLIGHTS

- Mini-ITX Form Factor (6.7" x 6.7")
- Compact profile 10" x 11" x 2" (273mm x 300mm x 65mm)
- 600MHz, 1.3GHz, 1.6GHz, 1.8GHz Pentium® M and Celeron®
- 2GB DDR-333
- Low Profile IDE CD/DVD Drive
- 1 Slim ODD Drive Bay
- High resolution graphics, 10 / 100 / 1000 Ethernet, six (6) USB 2.0 ports, four (4) serial ports
- Two (2) Year Warranty

KEY FEATURES

- Low power system
- Temperature controlled fans
- Integrated graphics
- HD Audio with surround header
- Large storage capability
- Fully RoHS compliant
- Customized BIOS settings
- Operating system loaded
- Highly customizable

ROHS
COMPLIANT

The CorBrick855X™

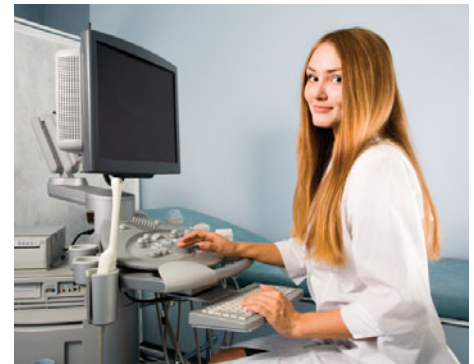
Is a prepackaged configuration built around the small footprint, high performance-per-watt Gator Mini-ITX long-life industrial motherboard in a compact and rugged system. The CorBrick855X™ offers a modular platform for a broad array of thermal density and size constrained applications.

The Intel® 855GME chipset of the Gator Mini-ITX industrial motherboard provides virtually all of the resources needed to build a reliable and consistent computation platform for virtually any application.

A wealth of generic and legacy I/O (multi-serial, parallel, and USB ports) and high resolution using Intel Extreme Graphics 2 Technology provide the basis for a broad range of 3D/2D graphics interface with resolutions up to 1800x1440 @ 85Hz max CRT or 2048x1536 @ 60Hz max FP. Additional features like RAID and optional Dual Ethernet capabilities improve long-term reliability and provide maximum integration.

Where most custom systems are configured for a specific environment and limited space constraints, this system is specifically engineered for ease of use and ready-to-go deployment.

In addition to the standard features offered, the CorBrick855X can be customized with additional Ethernet, serial ports, memory, and



storage options.

Corvalent also offers BIOS customization, which can include splash screens and limiting which options can be modified in the field.

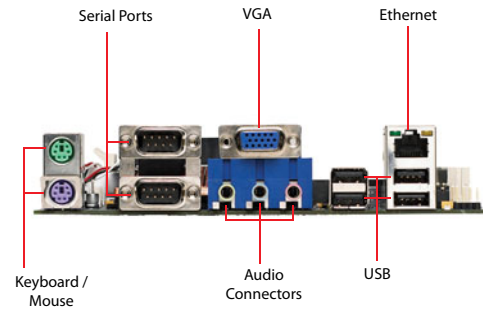
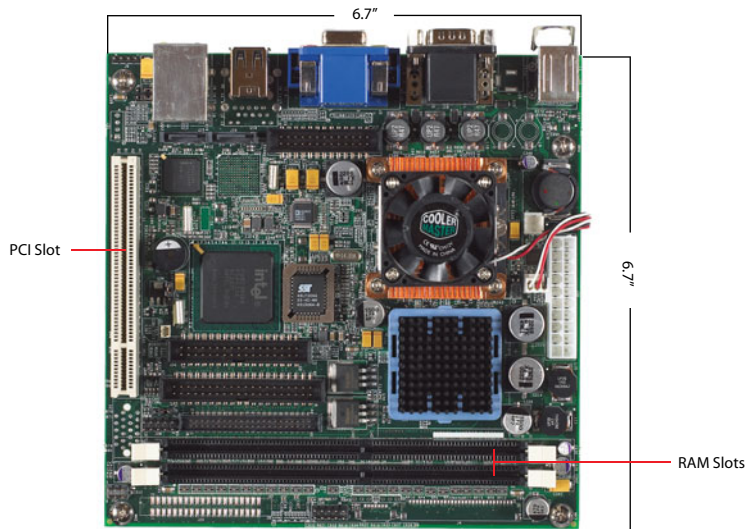
OUR COMMITMENT TO QUALITY

All Corvalent products are designed and manufactured in an ISO 9001:2000 environment and backed by a seven (7) to ten (10) year production life cycle guarantee.



CorBrick855X™

LOW PROFILE INTEGRATED EMBEDDED SYSTEM



TECHNICAL SPECIFICATIONS

Form Factor 273mm x 300mm x 65mm (DxWxH)

Cooling Units Two (2) 5cm fans (side)

Air Flow Front to rear

Standard Drives One (1) Slim CD/DVD RW
One (1) 2.5" HDD SATA 120 GB

Drive Bays One (1) 2.5" HDD hidden
One (1) 3.5" FDD open

Expansion Slots Two (2) horizontal slots: One (1) 32-bit PCI slot
One (1) Mini-PCI slot (PCI 2.2 33/32MHz connector Type III)

Motherboard Corvalent – Gator Mini-ITX (GMEIX)

Chipset Intel® 855GME + ICH4

Microprocessor Intel Pentium® M processors: 1.8GHz,
1MB L2 cache (Socket 479)

Front Side Bus 400MHz

Memory 1GB DDR-333

System Bus One (1) 32-bit PCI slot (Supports two (2) devices via optional riser card)
One (1) Mini-PCI slot (PCI 2.2 33/32MHz connector Type III)

Onboard I/O Two (2) Serial ATA connectors (150MB/s) with RAID 0/1
One (1) 40-pin PATA100 EIDE connector (supports two (2) devices)
One (1) 44-pin PATA100 EIDE connector (supports two (2) devices)
Six (6) USB 2.0 ports
(Four (4) connectors, two (2) on headers)

RS232 serial port options available: two (2) or four (4) ports , One (1) factory configurable to RS422

Infrared support, Floppy controller

One (1) ECP/EPP parallel port

One (1) PS/2 mouse/keyboard connector

90W DC Open Frame Power W/80W AC Adaptor

Video Graphics Intel Extreme Graphics 2 Technology
Dual-channel LVDS controller

Ethernet Ethernet options include 10/100 and 10/100/1000 ports

Audio AC'97 compatible sound controller

BIOS AMI®

Battery Removable lithium battery for CMOS memory

Industrial Device Hardware monitor, onboard buzzer

Operating Temp 0°C to 45°C

Non-Operating -20°C to 65°C

Op. Humidity 10% to 85% @ 40°C RH non-condensing

Non-Operating 10% to 95% @ 40°C RH non-condensing

Part Number CorBrick855X

EcoSys965™

ECOSYS FAMILY

ECO-FRIENDLY, HIGH PERFORMANCE INDUSTRIAL SYSTEM

CONVERGING HIGH-PERFORMANCE
AND VALUE WITH A LONG-LIFE CYCLE



PRODUCT HIGHLIGHTS

- 5.4" x 14.5" x 13.0"
(136mm x 370mm x 329mm)
- Intel® Core™ 2 Duo E6400 processor
- 2GB DDR2 (800MHz)
- 500GB SATA HDD
- Two (2) Intel 82573L PCI-e GbE Ethernet Ports
- Four (4) USB 2.0 ports (back)
Two (2) USB 2.0 ports (front)
- 300W P4 Power Supply
- Supports Windows XP, Vista, 2003 Server

KEY FEATURES

- High-performance system
- Temperature controlled fans
- Integrated graphics
- HD Audio with surround header
- Large storage capability
- Fully RoHS compliant
- Customized BIOS settings
- Operating system loaded
- Highly customizable

The EcoSys965™

Prepackaged configuration built around the 965MTX™ long-life industrial motherboard. The EcoSys965™ offers a high-performance platform for a broad array of analysis, control and storage applications. As a starting point for a project requiring sophisticated processing and I/O capabilities, the EcoSys965 is unique.

This exceptional system is specifically engineered for ease deployment to field or embedded solution requirements.

The Intel® Q965 Express chipset provides virtually all of the resources needed to building a reliable and consistent computation platform for virtually any application. A wealth high-bandwidth interfaces PCI Express, Serial ATA, and Hi-Speed USB 2.0 connectivity and very high resolution graphics (2048x1536 @ 75Hz max.) provide the basis for a broad range of graphic interface uses.

Consuming only 3.3 watts in idle and 6 watts during seek, Corvalent's SATA hard drive supports quieter, cooler-running industrial computer devices, with power usage up to 30% lower than any other hard drive in the industry. Cool and quiet, Corvalent's Green Power technology yields lower operating temperatures for increased reliability and low acoustics for ultra-quiet industrial computers.

The 80 Plus performance specification



requires that our power supplies in Corvalent's industrial computers and servers to be 80% or greater energy efficient at 20%, 50% and 100% of rated load with a true power factor of 0.9 or greater.

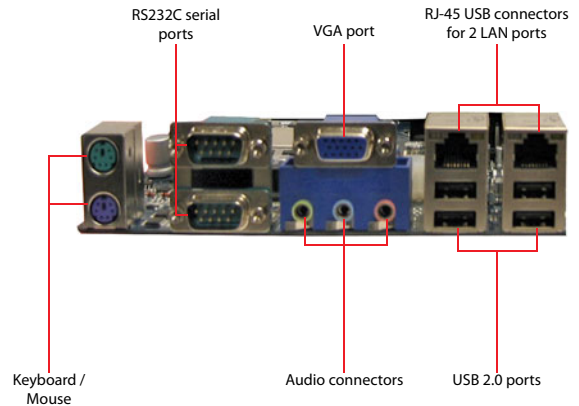
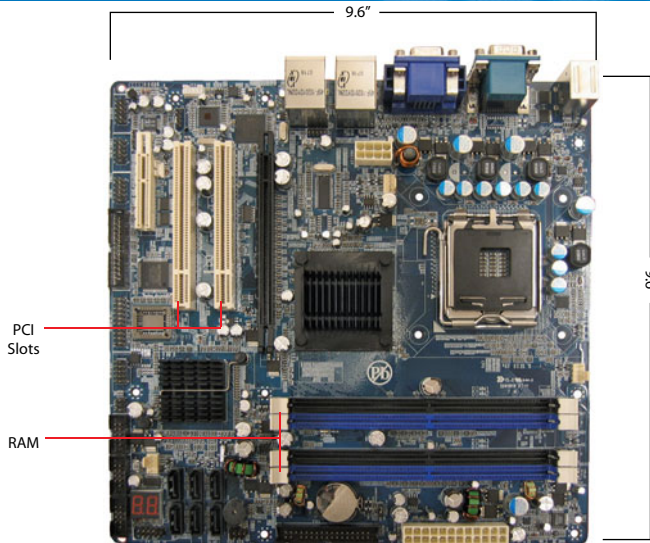
OUR COMMITMENT TO QUALITY

All Corvalent products are designed and manufactured in an ISO 9001:2000 environment.



EcoSys965™

ECO-FRIENDLY, HIGH PERFORMANCE INDUSTRIAL SYSTEM



TECHNICAL SPECIFICATIONS

Form Factor 5.4" x 14.5" x 13.0"
(136mm x 370mm x 329mm)

Cooling Units Two (2) 6cm fans (rear-mounted)

Air Flow Front to rear

Standard Drives One (1) 5.25" SATA DVD/CD RW
One (1) 3.5" HDD SATA 500GB

Drive Bays One (1) 3.5" (open)

Expansion Slots Four (4) vertical slots: One (1) PCI Express x16 dedicated graphics slot, One (1) PCI Express x4 slot in a x16 connector, Two (2) 32-bit PCI slots

Motherboard Corvalent - 965MTX (P65MX)

Dimensions 9.6" x 9.6" (243.84mm x 243.84mm)

Microprocessor Embedded Intel® Pentium® 4 Processor (LGA 775), Intel Celeron® D 440 Processor
Intel® Core™ 2 Duo E6400 Processor
Intel Core 2 Duo E4300 Processor
For additional supported processors, please contact us.

Chipset Intel Q965 Express + ICH8DO

Front Side Bus 1066/800/533MHz

Memory 8GB DDR2 533/667/800MHz

System Bus One (1) PCI Express x16 dedicated graphics slot
One (1) PCI Express x4 slot in a x16 connector
Two (2) 32-bit PCI slots

Onboard I/O Six (6) SATA2 connectors (300MB/s supports RAID 0/1/5/10)
Ten (10) USB 2.0 ports, four (4) connectors, six (6) USB headers
Four (4) RS232C serial ports, two (2) connectors, two (2) headers
One (1) factory configurable to RS422
Infrared support on COM2 through header
One (1) ECP/EPP parallel port header
One (1) PS/2 mouse/keyboard connector

One (1) floppy connector
One (1) Trusted Platform Module Header
ATX2.2 - 24-pin (20-pin), 8-pin(4-pin)
ATX12V power connector
300W 80 Plus Power Supply

Video Graphics Intel Graphics Media Accelerator 3000
(Maximum resolution 2048 x 1536 @ 75Hz)
Single DB15 connector

Ethernet Two (2) onboard Intel 82573L PCI Express-based GbE Ethernet ports

Audio Intel HD Audio, 3-Jack Audio, Surround sound header, SPDIF output header

Industrial Devices Hardware monitoring including fan, CPU temperature and voltages POST display

BIOS AMI®

Battery Removable lithium battery for CMOS memory

Operating Temp 0°C to 55°C

Non-Operating -40°C to 70°C

Op. Humidity 5% to 95% @ 40°C non-condensing

Non-Operating 5% to 95% @ 40°C non-condensing

Part Number EcoSys965

CorBrick™ 965

CORBRICK FAMILY

HIGH PERFORMANCE 4U WALLMOUNT EMBEDDED SYSTEM

CONVERGING HIGH-PERFORMANCE AND
VALUE WITH A LONG-LIFE CYCLE



PRODUCT HIGHLIGHTS

- 4U - 15.7" x 7" x 16.5"
(400mm x 177mm x 420mm)
- Intel® Core™ 2 Duo E6400 processor
- Intel Q965 Express chipset
- 2GB DDR2 (667MHz)
- 250GB SATA2 HDD
- Two (2) Intel 82573L PCI-e GbE Ethernet Ports
- Four (4) USB 2.0 ports (back)
- 400W Power Supply ATX, PS2

KEY FEATURES

- High-performance system
- Temperature controlled fans
- Integrated graphics
- HD Audio with surround header
- Large storage capability
- Fully RoHS compliant
- Customized BIOS settings
- Windows™ Operating system pre-loaded
- Highly customizable

The CorBrick965™



Prepackaged configuration built around the high performance-per-watt 965MTX motherboard, the CorBrick965 offers a modular platform for a broad array of thermal density and size constrained applications.

As a starting point for a project requiring sophisticated processing and I/O capabilities, the CorBrick965 is unique. Where most pre-configured systems are focused in networking environments, this exceptional system is specifically engineered for ease of deployment to field or embedded solution requirements.

Powered by the Intel Q965 Express chipset, the CorBrick965 provides virtually all of the resources needed to building a reliable and consistent computation platform for virtually any application. A wealth of high-bandwidth interfaces including PCI Express, Serial ATA, and Hi-Speed USB 2.0 connectivity and very high resolution graphics (2048x1536 @ 75Hz max.) provide the basis for a broad range of graphic interface uses.



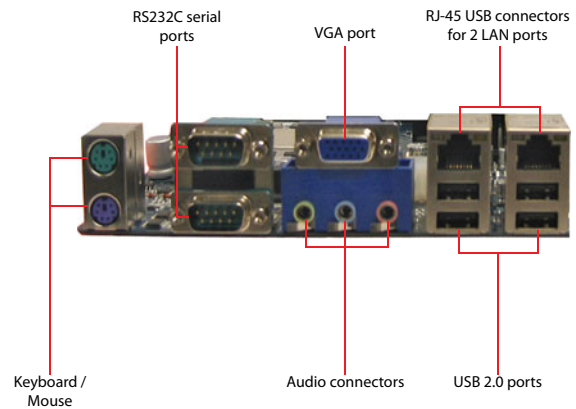
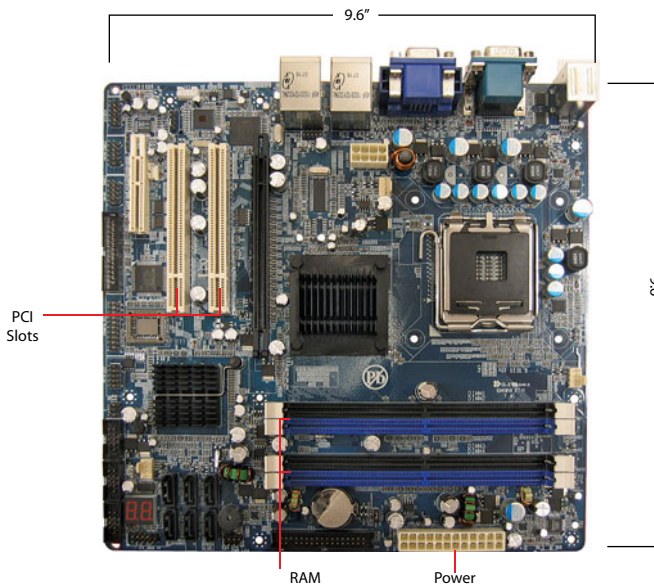
OUR COMMITMENT TO QUALITY

All Corvalent products are designed and manufactured in an ISO 9001:2000 environment.



CorBrick965™

HIGH PERFORMANCE 4U WALLMOUNT EMBEDDED



TECHNICAL SPECIFICATIONS

Form Factor	4U Wall Mount Micro ATX 15.7" x 7" x 16.5" (400mm x 177mm x 420mm)	ATX2.2 - 24-pin (20-pin), 8-pin(4-pin) ATX12V power connector
Cooling Units	One (1) 12cm (90 CFM) HD Ball Bearing Fan	Video Graphics Intel Graphics Media Accelerator 3000 (Maximum resolution 2048 x 1536 @ 75Hz) Single DB15 connector
Air Flow	Front to rear	Ethernet Two (2) onboard Intel® 82573L PCI Express-based GbE Ethernet ports
Standard Drives	One (1) 5.25" SATA CD/DVD RW One (1) 3.5" HDD SATA II 250 GB	Audio Intel HD Audio, 3-Jack Audio, Surround sound header, SPDIF output header
Drive Bays	One (1) 5.25" open One (1) 3.5" open	Industrial Devices Hardware monitoring including fan, CPU temperature and voltages, POST display
Expansion Slots	Four (4) vertical slots: One (1) PCI Express x16 dedicated graphics slot One (1) PCI Express x4 slot in a x16 connector Two (2) 32-bit PCI slots	BIOS AMI®
Motherboard	Corvalent – 965MTX (P65MX)	Battery Removable lithium battery for CMOS memory
Chipset	Intel® Q965 Express + ICH8DO	Industrial Device Hardware monitor, onboard buzzer
Microprocessor	Intel Core™ 2 Duo E6400 processor	Operating Temp 0°C to 45°C
Front Side Bus	1066MHz	Non-Operating -20°C to 65°C
Memory	2GB DDR2 (667MHz), Two (2) memory modules	Op. Humidity 10% to 85% @ 40°C RH non-condensing
System Bus	One (1) PCI Express x16 dedicated graphics slot One (1) PCI Express x4 slot in a x16 connector Two (2) 32-bit PCI slots	Non-Operating 10% to 95% @ 40°C RH non-condensing
Onboard I/O	Six (6) SATA2 connectors (300MB/s supports RAID 0/1/5/10) Ten (10) USB 2.0 ports, four (4) connectors, six (6) USB headers Four (4) RS232C serial ports, two (2) connectors, two (2) headers One (1) factory configurable to RS422 Infrared support on COM2 through header One (1) ECP/EPP parallel port header One (1) PS/2 mouse/keyboard connector One (1) floppy connector (supports two drives) One (1) Trusted Platform Module (TPM) header	Part Number CorBrick965

LegaSys440™

ECOSYS FAMILY

LEGACY, ROHS COMPLIANT PENTIUM III BASED SYSTEM

COMBINES LEGACY TECHNOLOGY
SUPPORT AND A LONG-LIFE PACKAGE



PRODUCT HIGHLIGHTS

- Mid Tower Chassis
16.8" x 8.3" x 17.4"
- Intel® Pentium® III
(Socket 370) 850MHz
- 256MB PC100 SDRAM
- One (1) 10/100 Ethernet
- Two (2) USB 1.1 ports
- 400W Power Supply ATX
PS2 size
- Supports Windows™ 98Se,
Windows 2K, Windows XP,
DOS

KEY FEATURES

- High-performance system
- Fully RoHS compliant
- Customized BIOS settings
- Highly customizable
- Legacy features

ADDITIONAL OPTIONS

- System memory up to 768MB
- CDROM, CD R/W or DVD-RW
- Windows XP, DOS or RedHat
Linux
- Operating system loaded and
configured
- Beige or Black

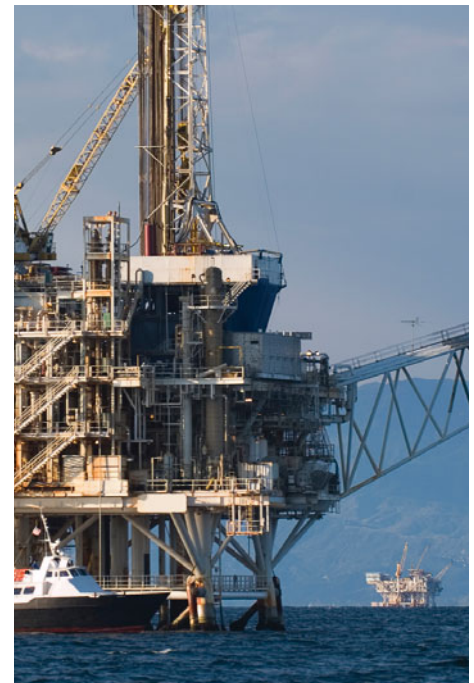
The LegaSys440™

is a pre-packaged configuration built around the Raptor ATX long-life industrial motherboard. The LegaSys440™ supports pre-Pentium 4 software, three full-length ISA slots with full DMA, and is fully RoHS compliant. The LegaSys440 is an ideal replacement for aging 386 and PIII non-RoHS systems. The LegaSys440 can help ensure all of your pre-existing controllers, testers and other installed devices work properly and without compatibility issues, saving the time and effort of rewriting software and changing peripherals.

Powered by the Intel® 440BX AGP chipset, the LegaSys440 features a 100MHz front side bus and supports up to 768MB of PC100 SDRAM with or without ECC.

Where most pre-configured systems are focused in networking environments, this exceptional system is specifically engineered for ease of deployment to the field or other situations requiring an embedded solution.

Ideally suited for medical device refurbishment, and the replacement of failed computer hardware in industrial automation / machine control devices. You don't have to lose valuable assets when your aging computer hardware fails. The LegaSys440 is manufactured new, and can be adapted to your particular needs, extending the life of expensive industrial equipment for decades to come.



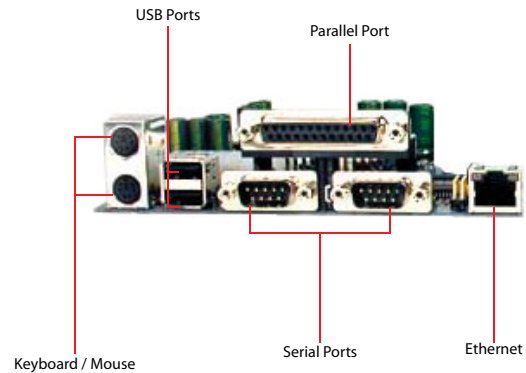
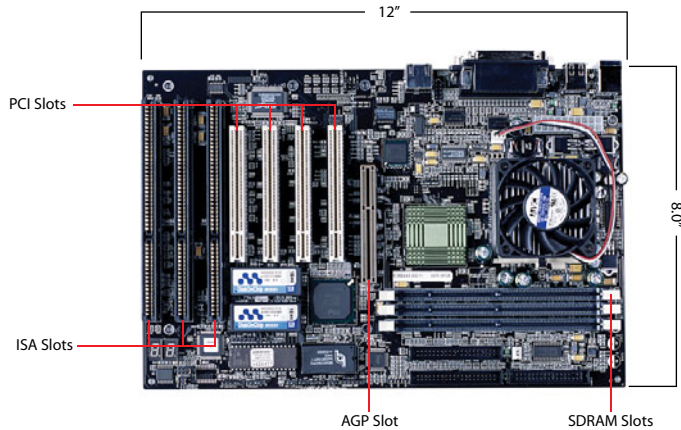
OUR COMMITMENT TO QUALITY

All Corvalent products are designed and manufactured in an ISO 9001:2000 environment.



LegaSys440™

LEGACY, ROHS COMPLIANT PENTIUM III BASED SYSTEM



TECHNICAL SPECIFICATIONS

Form Factor 16.8" x 8.3" x 17.4"
(426mm x 210mm x 440mm)

Cooling Units 12cm fan (rear-mounted)

Air Flow Front to rear

Standard Drives One (1) 5.25" DVD/CD drive
One (1) 3.5" HDD 80GB (hidden)
One (1) 3.5" FDD, 1.44MB white

Drive Bays Three (3) 5.25 (open)
One (1) 3.5" (open)
One (1) 3.5" (hidden)

Expansion Slots Seven (7) PCI/AGP/ISA Vertical slots:
Four (4) 32-bit PCI slots
(one used by graphics card)
Three (3) 16-bit ISA slots (one shared)
One (1) AGP x2

Motherboard Corvalent - Raptor ATX (RBXAX)

Dimensions 8.0" x 12.0"

Microprocessor Intel® Pentium® III (Socket 370) 850MHz

Chipset Intel 440BX AGP set

Front Side Bus 100/66MHz

Memory 256MB PC100 SDRAM
Supports three (3) PC100 SDRAM memory
modules up to 768MB

System Bus Four (4) 32-bit PCI slots
Three (3) 16-bit ISA slots

Onboard I/O Two (2) 40-pin ATA/33 EIDE connectors
Two (2) USB 1.1 ports
Two (2) RS232 serial ports
One (1) parallel port

PS/2 mouse/keyboard connector
Floppy controller
400W Power Supply ATX, PS2 size

Video Graphics Corvalent Rattler M4

Ethernet One (1) 10/100 ethernet

Audio Three (3) 16-bit ISA slots

Industrial Devices POST code diagnostics display
Watchdog timer

BIOS AMI®

Battery Removable lithium battery for CMOS
memory

Operating Temp 0°C to 50°C

Non-Operating -20°C to 80°C

Op. Humidity 10% to 85% @ 40°C non-condensing

Non-Operating 10% to 95% @ 40°C non-condensing

Part Number LegaSys440